



Commercial Credit Group, Inc (Mark Wenzel)
525 N Tryon Street, Charlotte, NC 28202 USA
(704) 414-2456

VIN: 1FUJGLD51GLGS5857
Stock #: 14440

2016 FREIGHTLINER CASCADIA

SPECIFICATIONS	
MILEAGE	466,813 / 466,813 (ECM)
ENGINE HOURS	15,314
ENGINE	DETROIT DD15 14.8L 455 HP
ENG BRAKE	YES
ENG SERIAL	472906S0302597
FUEL / TANKS	DIESEL - 2 ALUM 200 GAL TOTAL
EXHAUST	SINGLE
TRANSMISSION	DETROIT DT12 DA 1750-HD 12 SPD AUTO
DRIVE OPTS	POWER STEERING, OVERDRIVE, CRUISE
REAR END	DETROIT 3.23
AXLE TYPE	TANDEM - F 13,220 LB / R 40,000 LB
GVWR	53,220
FRAME	STEEL
SUSPENSION	AIR RIDE
WHEELBASE	238"
TIRE SIZE	11R22.5
WHEELS	F STEEL / R STEEL
WHEEL 5TH	AIR SLIDE
AIR COND	YES, OPERATIONAL
AUX POWER UNIT?	YES
SLEEPER	72"
DUAL BUNK	YES
INTERIOR COLOR	GREY
RADIO	AM/FM, OPERATIONAL
MIRRORS	DUAL POWER
HIGH BACK SEATS	DUAL
PASSENGER SEAT	AIR RIDE
EXTERIOR COLOR	WHITE
BUMPER	PLASTIC
EXTERIOR OPTS	HEATED MIRRORS, ROOF FAIRINGS
COLLISION AVOIDANCE?	NO



BRAKES	
LEFT FRONT	RIGHT FRONT
COVERED	COVERED
LEFT REAR 1	RIGHT REAR 1
COVERED	COVERED
LEFT REAR 2	RIGHT REAR 2
COVERED	COVERED

TIRES & WHEELS			
LEFT FRONT		RIGHT FRONT	
19 / 32 STEEL		18 / 32 STEEL	
LEFT OUTER 1	LEFT INNER 1	RIGHT INNER 1	RIGHT OUTER 1
16 / 32 CONTINENTAL STEEL	5 / 32 BRIDGESTONE STEEL	18 / 32 BRIDGESTONE STEEL	14 / 32 CONTINENTAL STEEL
LEFT OUTER 2	LEFT INNER 2	RIGHT INNER 2	RIGHT OUTER 2
11 / 32 BRIDGESTONE STEEL	10 / 32 BRIDGESTONE STEEL	11 / 32 CONTINENTAL STEEL	12 / 32 CONTINENTAL STEEL
FRONT TIRES: 11R22.5		REAR TIRES: 11R22.5	

ADDITIONAL TIRE DETAIL
FRONT TIRES ARE RALSM BRAND.

GENERAL OBSERVATIONS

OIL MILKY?	NO	LIGHTS WORK?	YES - ALL
OIL LEAKS?	SEE NOTES	WIPERS WORK?	YES
WIPER LEAKS?	NO	SAFETY WORKS?	YES - ALL

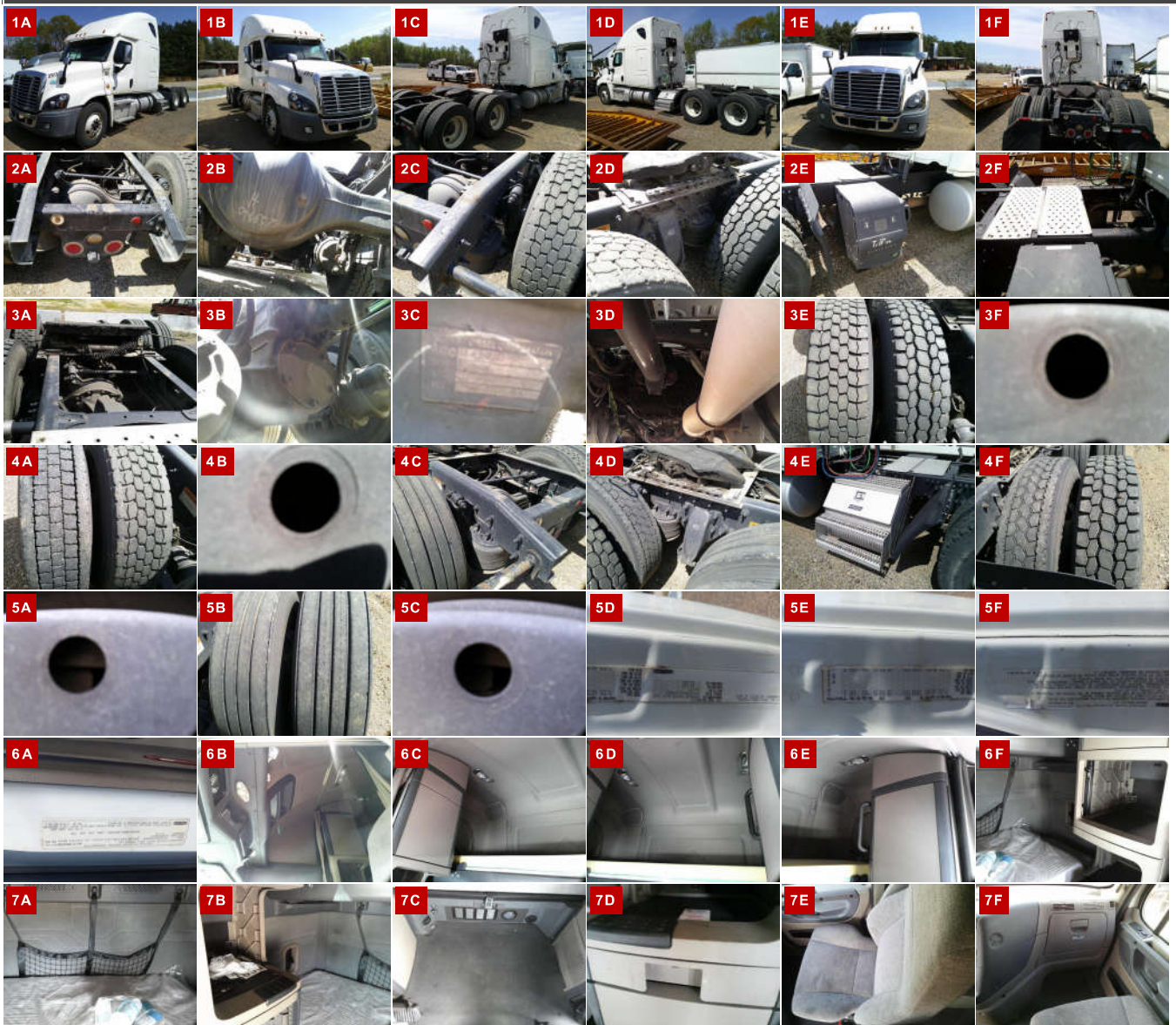
WATER LEAKS?	NO	GAUGES WORK?	YES - ALL
OIL IN COOLANT?	NO	AIR HORN WORKS?	YES
CLUTCH PLAY?	NA	CITY HORN WORKS?	YES
STARTS?	YES		
DRIVES	YES	DIESEL PARTICULATE FILTER	PASS

ADDITIONAL OBSERVATIONS

CRACKED WINDSHIELD. TRIPAC APU DID NOT START.

WEAR & TEAR DETAIL	
DIAGNOSTICS	8 INACTIVE FAULTS DETECTED - (SEE ECM REPORT)
INTERIOR CAB	TORN FABRIC ON DRIVERS SEAT. DAMAGED HANDLE ON DRAWER LATCH.
DRIVER SIDE EXTERIOR	CHIPS/DINGS ON DRIVER SIDE EXTERIOR STORAGE DOOR. CHIPS/SCRATCHES ON EDGE OF DRIVER DOOR AND EXTERIOR LH MIRROR COVER.
BUMPER	DAMAGED PLASTIC TRIM AT BOTTOM OF RH SIDE BUMPER.
PASSENGER SIDE FENDER	DAMAGED FIBERGLASS FOR SIDE OF RH FENDER.
CAB	LARGE DENT/DAMAGE ON PASSENGER SIDE EXTERIOR SLEEPER. LARGE SCRATCH ON BOTTOM OF PASSENGER SIDE DOOR.
TIRES	1 TIRE BELOW 10/32

REPORT PHOTOS







REPORT DOCUMENTS

Condition report only. National Inspection Services does not guarantee mechanical reliability.

© National Inspection Services
101 W. Shrader St. Liberty, MO 64068
www.nationalinspect.com